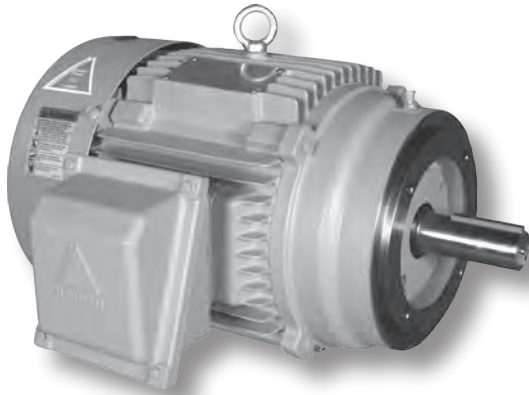


HYUNDAI CROWN TRITON™ SERIES MOTORS

PREMIUM EFFICIENCY

TEFC Enclosure ▪ C-Face ▪ Round Body
Three-Phase ▪ 208-230/460 Volt



Product Overview

- 1-40 HP
- 1800 RPM
- 208-230/460 volt
- TEFC enclosure
- Dual rated service factor
1.15 for 40°C / 1.0 for 65°C
- Class F insulation
- C-face - round body
- Premium Efficiency, meets or exceeds
EISA 2007 requirements defined in
NEMA MG-1 table 12-12
- 5 year warranty
- NEMA Design B
- Cast iron frame and conduit box
- Suitable for part winding start
on low voltage
- Suitable for wye-delta start (15-40 HP)
- Inverter ready, 10:1 CT / 20:1 VT
- F2 field mountable
- Class I, Division 2, Groups A, B, C, D
- CC # 038A



HP	RPM	Voltage	Frame	Model Number	FL Amps (A)	FL Eff. (%)	Approx. Wt. (lbs.)	Notes
1	1800	208-230/460	143TC	HHI1-18-143TCRD	1.6	85.5	53	
1.5	1800	208-230/460	145TC	HHI1.5-18-145TCRD	2.2	86.5	55	
2	1800	208-230/460	145TC	HHI2-18-145TCRD	3.0	86.5	55	
3	1800	208-230/460	182TC	HHI3-18-182TCRD	3.9	89.5	90	
5	1800	208-230/460	184TC	HHI5-18-184TCRD	6.5	89.5	105	
7.5	1800	208-230/460	213TC	HHI7.5-18-213TCRD	9.5	91.7	150	
10	1800	208-230/460	215TC	HHI10-18-215TCRD	12.8	91.7	165	
15	1800	208-230/460	254TC	HHI15-18-254TCRD	18.3	92.4	260	
20	1800	208-230/460	256TC	HHI20-18-256TCRD	24.8	93.0	300	
25	1800	208-230/460	284TC	HHI25-18-284TCRD	30.3	93.6	380	
30	1800	208-230/460	286TC	HHI30-18-286TCRD	36.0	93.6	410	
40	1800	208-230/460	324TC	HHI40-18-324TCRD	48.8	94.1	550	

When using any motor with a variable frequency drive, take precautions to eliminate or reduce shaft currents in order to prolong bearing life.



Dimensions On Page 102